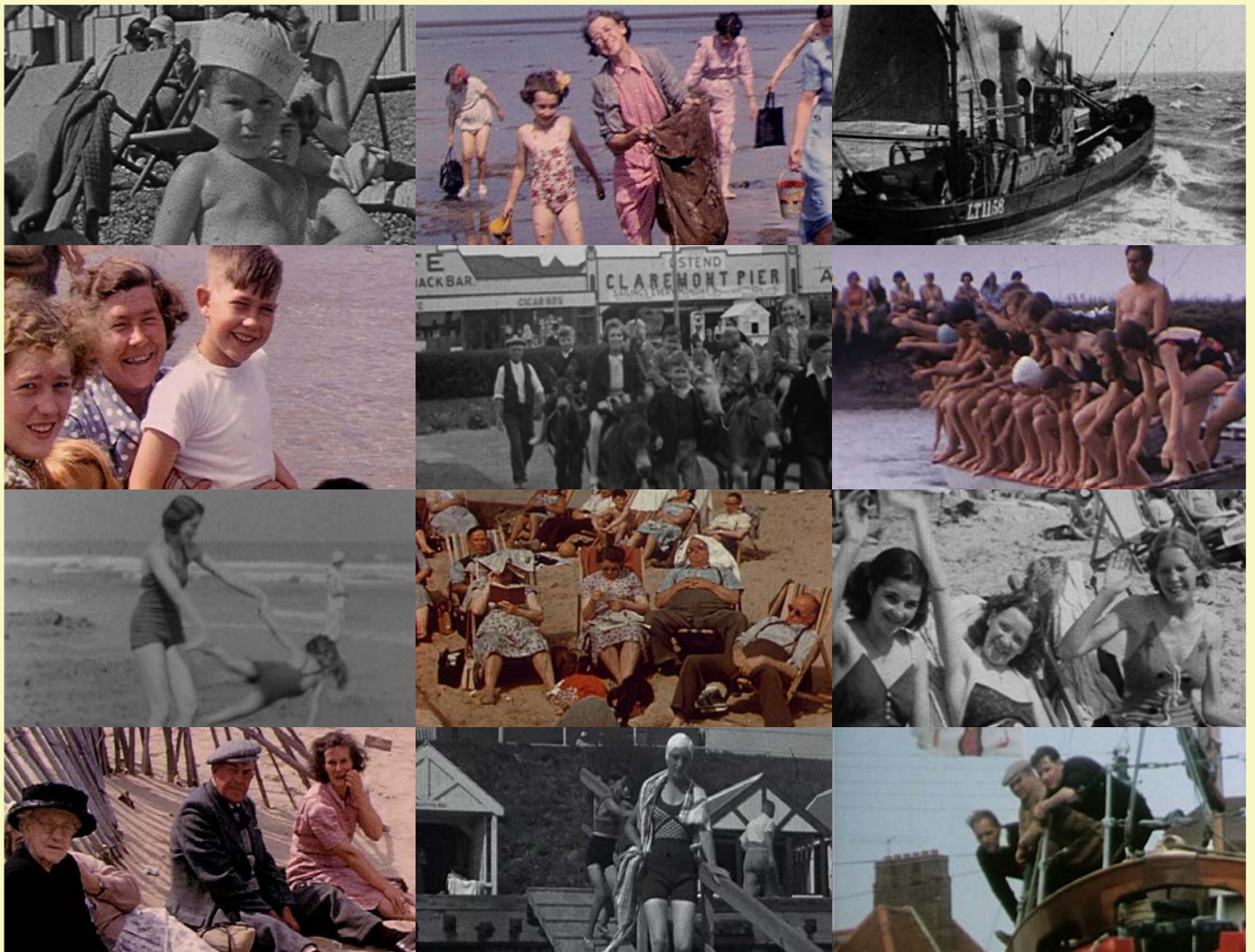


SCREEN - ON - SEA

BRINGING YOUR LOCAL ARCHIVE ALIVE



Come and see FOR FREE, local archive film in our pop up 'cinema' at events round the Norfolk & Suffolk coasts this summer. Footage of seaside fun and frolics caught on camera in resorts through the decades will feature as part of the British Film Institute's national Britain on Film Coast & Sea season. Brought to you by The Cambridge Film Trust, Screen-on-Sea is supported by West Norfolk, North Norfolk, Suffolk Coastal and Waveney Councils.



**BRITAIN
ON
FILM**
OUR LIVES.
OUR STORIES.

**Film
Audience
Network**
Supported by
The National Lottery®

**CAMBRIDGE
FILM
FESTIVAL**

**NORTH
NORFOLK
DISTRICT COUNCIL**

Borough Council of
King's Lynn &
West Norfolk



Suffolk Coastal & Waveney District Councils
in partnership
east.suffolk.gov.uk

FREE SCREENINGS

Saturday, 24th June - SOUTHWOLD ARTS FESTIVAL.

High St/Victoria St junction - 11am until 6pm.

Saturday, 15th July - BLAKENEY'S CHARITY CONCERT.

Quayside Car Park - 11am until 6pm.

Saturday, 22nd July - LOWESTOFT SUMMER FESTIVAL.

Royal Green by South Pier - 11am until 7pm.

Sunday, 23rd July - FELIXSTOWE CARNIVAL.

On the beach opposite The Alex café - 11am until 7pm.

Sunday, 30th July - WELLS-NEXT-THE-SEA CARNIVAL FETE.

Beach Road - 12 Noon until 5pm.

Tuesday, 15th August - HUNSTANTON.

The bandstand by Beach Terrace Rd - 11am until 7pm.

Wednesday, 16th August - CROMER CARNIVAL.

Outside Cromer Museum, Church St - 12 noon until 7pm.

Sunday, 20th August - HAPPISBURGH INT'L LIGHTHOUSE HERITAGE DAY.

On the clifftop, Beach Road - 11am until 5pm. (Additional parking available at Happisburgh Primary School, The Street, Happisburgh).

Monday, 21st August - ALDEBURGH CARNIVAL.

On the beach near the North Look Out Tower - 12 noon until 8pm.

Sunday, 10th September - KING'S LYNN'S HERITAGE OPEN DAY.

Tuesday Market Place - 11am until 5pm.

With most of the films sourced from the UEA's East Anglian Film Archive, Screen-on-Sea will show footage local to each resort on the coastal tour offering a real connection with our valuable film heritage. More films can be seen across the UK on the BFI's Britain on Film map on the BFI Player

player.bfi.org.uk/britain-on-film/

For more details of the Screen-on-Sea shows and more BFI Coast & Sea events around the UK

go to: britainonfilmscreenings.org.uk